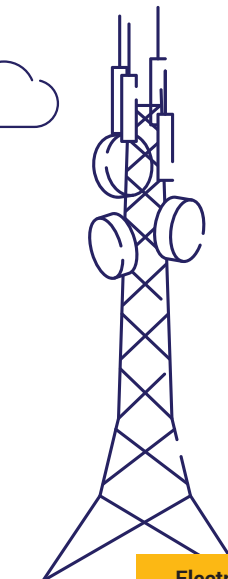




RF Connectors

(5G)AL 25" N-MA L Type



Electrical Specifications

Operating Frequency Band	30kHz ~3900MHz	
Impedance	50 + 5Ω (Internal spec: 50+4.5Ω)	
V.S.W.R (Max)	1.2:1 (Internal spec: 1.18)	
Insertion Loss (Max)	-0.3 dB - CABLE 30Cm (Internal spec: -0.29dB)	
PIMD (20W x 2tone), (Max)	3rd -150dBc/5rd -160 dBc (Internal spec: 3rd -151dBc / 5rd - 161 dBc)	
Working Voltage (Max)	1.5 Kv	
Insulation Resistance (Min)	10 GΩ	
Contact Resistance	Inner Contact (Max)	0.005 Ω
	Outer Contact (Max)	0.01 Ω

Mechanical Specifications

Coupling Nut Torque (Recommended)	5 Nm - 10 Nm
Durability (Mating), (Max)	500

Environmental Specifications

Operating Temperature / Humidity	-40C to +70 °C / Up to 95%
Ingress Protection Test Method	IEC 60529:2001, IP65

Material Specifications

Bodies	Brass / Alloy Plated	
Back Nut	Brass or ZnDc / Nickel Plated	
Contact	Male	Brass / Silver Plated
	Female	Beryllium - Copper / Silver Plated
Cap (Coupling Nut)	Brass / Nickel Plated	

