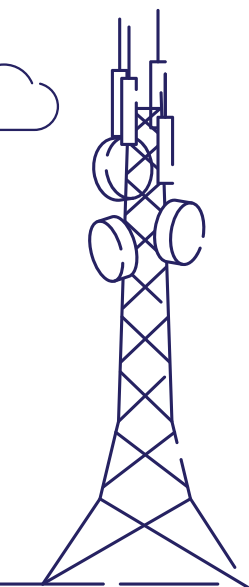




Inbuilding Antenna

0360LI-09P

Multi Band Single Polarization
30~450MHz
Omni-Directional Antenna



Connector		1
Frequency Band	MHz	430-450
Polarization		Vertical
Gain	dBi	9.0
VSWR		1.8
Max. Effective Power per Port	W	100
Impedance	Ω	50

Horizontal Pattern		
Azimuth Beamwidth	°	360

Horizontal Pattern		
Elevation Beamwidth	°	360

Connector	Quantity	EA	1 x N Female
Dimensions	Antenna	mm	2500
Weight	Antenna	Kg	2
Radome	Material		FRP
Mast Diameter Supported		mm	30~50

